
SAND WASHING RECOVERY SYSTEM



Brief introduction

Kinglink sand washing & recycling system is designed based on sand washer and sand recycling system by adopting foreign advanced technology. This system mainly includes: XSD wheel sand washer, high frequency dewatering screen, high pressure cyclone, cleaning tank, return box, high pressure wearable slurry pump and motors, etc. The system has simple structure and multiple function, and is widely used for crushed sand, river sand, lake sand or sea sand washing, screening, recycling and dewatering.



Working principle

Washing: The bucket is driven by the motor through the reducer and rotates in circle. There are many sand storage web grooves and bucket screen for sand storage and primary dewatering. When the bucket moves, sand can be put out by sand storage web groove after being cleaned in the cleaning tank and primary dewatered on the bucket screen.

Recycling: Flowing slurry water is extracted by slurry pump. Fine sand is collected by the centrifugal force of the cyclone, then fed to the polyurethane screen from the apex spray. The 0.16-3mm fine sand and water are efficiently separated through the vibration screen.

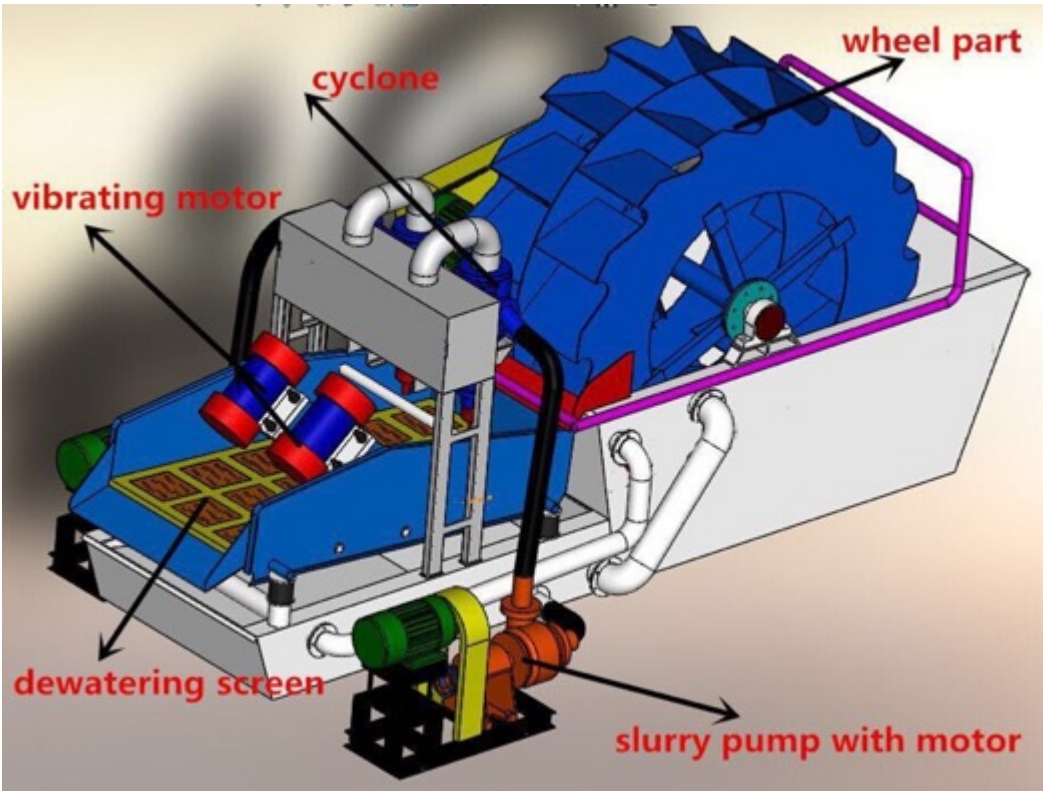


SHANGHAI KINGLINK INDUSTRY CO., LTD

Building 3, NO.123 Shenmei Road, Pudong District, Shanghai, China 201318

Tel: (00)86 (0)21 20958317 Fax: (00)86 (0)21 20959271 Web: www.kinglink-china.com

Dewatering: coarse sand (3-10mm) and fine sand (0.16-3mm) are fed onto polyurethane vibrating screen for dewatering.



上海秦路实业有限公司

上海市浦东新区沈梅路 123 弄 邮编: 201318

电话: (00)86 (0)21 20958317 传真: (00)86 (0)21 20959271

Tech specifications of system

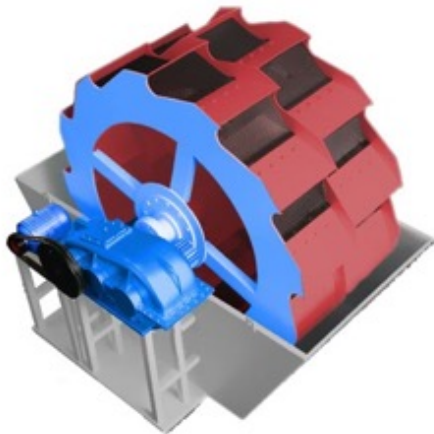
Model	Power (kw)	Specs (mm)	Feed size (mm)	Sand Production (t/h)	Water (m ³ /h)	Weight (kg)	Overall Dimension (L x W x H) (mm)
KL26-35	28.4	350	≤10	20-50	50-80	6180	6200×2150×2670
KL26-55	31.9	550	≤10	30-60	60-130	6680	6200×2150×2670
KL30-65	47	650	≤10	50-120	70-150	9300	7200×2900×3070
KL36-75	60	750	≤10	120-150	150-300	16800	9800×2400×3670
KL36-120	83	1200	≤10	120-150	150-300	17500	9800×2400×3670

Features of system

- 1.Higher sand quality, lower moisture content.
- 2.Recycled fine size 0.16-3mm sand, lower mud content.
- 3.Compact structure, multiple functions, easy install, convenient maintenance, small occupation area.
- 4.High capacity, after this machine 95% sand can be washed.
- 5.Solve sedimentation tank cleaning problem, higher economical profit.

●XSD Impeller Sand Washer

Model	Wheel diameter (mm)	Selected size (mm)	Capacity (t/h)	Power (kW)	Weight (t)	Overall Dimension (mm)
XSD2610	2600	≤10	50	7.5	2.68	3320×2125×2670



●Dewatering Screen 1500*3000



Working principle:

Dewatering screen adopts dual-motor self-synchronization technology. Motors coordinate with universal eccentric and adjustable amplitude vibrator. when dual motors start to work, centrifugal forces which generate by the eccentric models will superposition themselves and forming a single direction vibration. The high frequency drive vibration drive of the screen will line move back and forth in line repeatedly.



Model	Screen area (m ²)	Power (kw)	Capacity (m ³ /h)	Feed size (mm)	Weight(t)	Overall dimension (L*W*H) (mm)
1500*3000	4.5	2*3	100-120	≤10	2.5	3320*1900*1351

●Hydro-cyclone 250



Working Principle:

Slurry is introduced under pressure through inlet in tangential or involute direction (depending on feeding way of the inlet head) into the hydro cyclone. Under centrifugal force, large particles will move downwards along outer swirling flow and be discharged through apex as underflow while fine particles will move upwards through inner swirling flow and be discharged from vortex finder as overflow.

Model	Overflow Diameter (mm)	Cone Angle	Max feeding size (mm)	Feeding Pressure (Mp)	Capacity (m3/h)	Classification Granularity (um)
250	80	15	3	0.05-0.4	40-65	40-100

●Slurry Pump

Model	Pump (Inlet/outlet)	Flow(m ³ /h)	Head (m)	Power (kw)	Rotation (r/min)	Net positive suction head (m)
KMZ80-20-40	4/3	43	21	11	970	4.5



上海秦路实业有限公司

上海市浦东新区沈梅路 123 弄 邮编: 201318

电话: (00)86 (0)21 20958317 传真: (00)86 (0)21 20959271

Equipment Accessories



Gear



Bottom flow port



Butterfly valve



Screen mesh



Vibrator



Hydro cyclones group



Cut off Valve



Motor



Water pump



Cyclone



Impeller



Vibrating motor

Note: All the above information is subject to our final confirmation and for your reference only.

上海秦路实业有限公司

上海市浦东新区沈梅路 123 弄 邮编: 201318

电话: (00)86 (0)21 20958317 传真: (00)86 (0)21 20959271